



GOOD MORNING
Have Good Trading Day

Friday



Price is what you pay.
Value is what you get.

- Warren Buffet



MARKET PLUSE

INDIAN INDICES			
NAME	CMP	NET CH.	%
SENSEX	27506	-58	-0.21
NIFTY	8319	-15	-0.19

INDIAN ADR'S		
SYMBOL	CLOSE	GAIN/ LOSS %
DRREDDY	55.50	-0.61
HDFCBANK	59.22	-0.27
ICICIBK	10.54	+1.44
INFY	31.54	+0.90
TATAMOTOR	38.60	+1.85
WIPRO	11.88	+1.54

FII AND MF ACTIVITY	
SYMBOL	In Crs.
FIIs Eq (Provisional)	-792.54
FIIs Index Future	650.64
FIIs Index Options	1302.80
FIIs Stock Future	-646.33
FIIs Stock Options	-24.95
DII's Eq (Provisional)	+683.29

CURRENCY	
RBI RATE	28-MAY-2015
RUPEE - \$	63.9010
EURO	69.7352
YEN 10	51.6000
GBP	98.1647

MARKET PLUSE

GLOBAL INDICES			
NAME	CMP	NET CH.	%
DOW	18126	-37	-0.20
NASDAQ	5098	-8.60	-0.17
NIKKEI	20605	+54	+0.26
HANG SENG	27472	+18	+0.07
SGX NIFTY	8292	-23	-0.27

WORLD COMMODITIES		
FUTURE	U\$\$	CHANGES
CRUDE	58.33	+0.65
NATURAL GAS	2.713	+0.007
GOLD	1189.3	+1.2
SILVER	16.705	+0.036
COPPER	2.7765	+0.0090

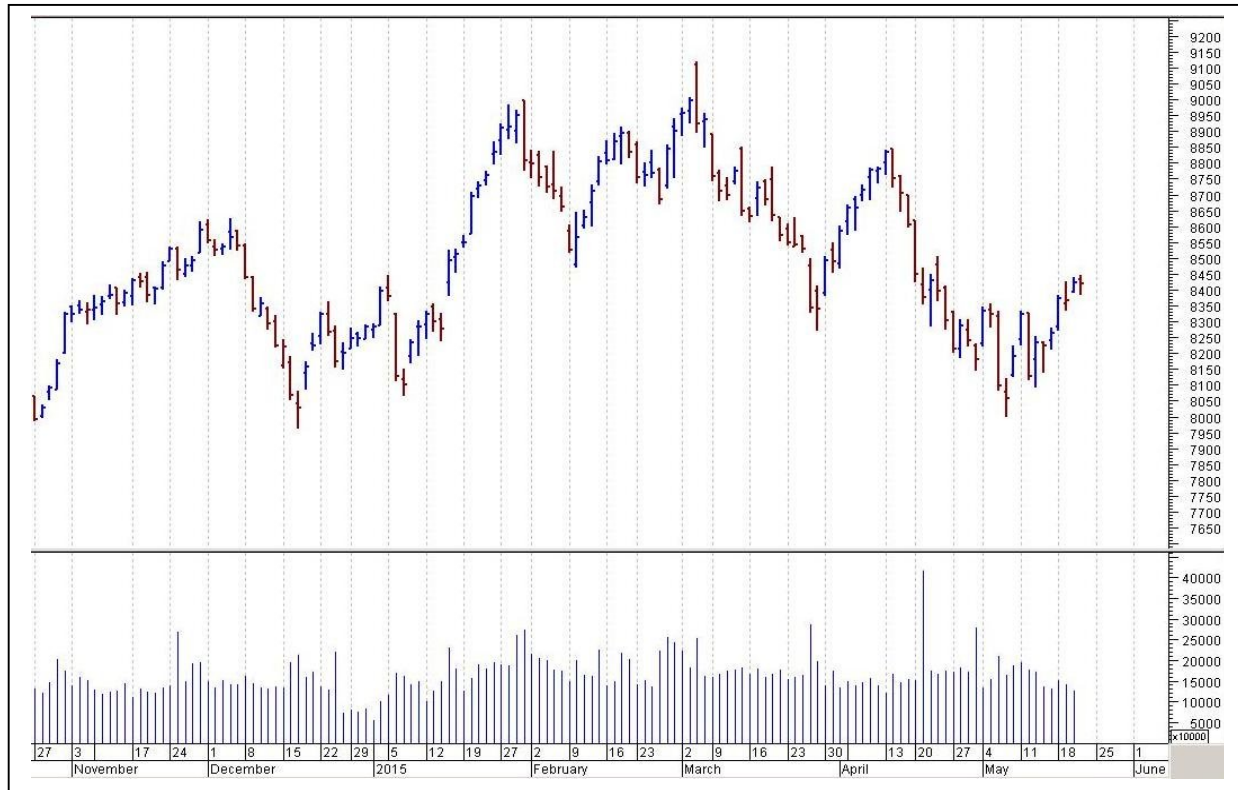
WORLD EVENTS	
<ul style="list-style-type: none"> US: Prelim GDP q/q Chicago PMI UK: GDP m/m 	

TOP STORY

- Coal India Q4 Net Profit Down 4.4% At `4,238.5 Cr Vs `4,434 Cr (YoY) Total Income Up 3.8% At `21,339 Cr Vs `20,564 Cr (YoY)
- ONGC Q4: Net Profit At `3,935 Cr Vs `4,889 Cr (YoY) Total Income At `21,647.5 Cr Vs `21,313 Cr (YoY)
- Aurobindo Pharma Q4 Cons Net Profit Down 19.5% At `403.8 Cr Vs `501.8 Cr (YoY) Cons Total Income Up 35.7% At `3,162.1 Cr Vs `2,329.8 Cr (YoY)
- GMDC Q4 Cons Net Profit Up 22.5% At `235 Cr Vs `191.8 Cr (YoY)
- REC Q4 Net Profit Down 8% At `1,096.5 Cr Vs `1,191.6 Cr (YoY) Total Income Up 20.1% At `5,333.4 Cr Vs `4,442.5 Cr (YoY)
- Idea Cellular MD Himanshu Kapania Appointed Chairman Of COAI
- NSE to launch new interest rate futures (IRF) contract today



NIFTY CHART



MARKET COMMENTARY

Indian equity markets closed with moderate losses in Thursday's trade. Investors remained on the sidelines and refrained from any buying activity ahead of gross domestic product (GDP) data, which is due on May 29 and RBI's bi-monthly policy preview, which is due on June 2. For Today's trade Nifty likely to trade in the range between 8340 – 8370 in the upper side and 8290 – 8270 in the lower side.

MARKET LEVELS

	CMP	SUPPORT LEVELS				RESISTANCE LEVELS			
NIFTY	8319	8290	8270	8250	8210	8340	8370	8390	8420
USDCINR	42.00	42.01	42.74	42.71	42.4	42.04	44.11	44.10	44.2



FUTURES CORNER

SCRIPS	CLOSE	SUPPORT	TARGET		REMARKS
		STOP LOSS	T1	T2	
DABUR	272.2	270	277	281	TRADING CALL
SYNDIBANK	111.75	109	115	119	TRADING CALL
AMTEKAUTO	157.55	156	162	167	TRADING CALL

EQUITY CORNER

SCRIPS	CLOSE	SUPPORT	TARGET		REMARKS
		STOP LOSS	T1	T2	
MASTEK	404.55	399	421	434	TRADING CALL
INTELLECT	110.1	108	114	117	

DELIVERY BASED CALL / INVESTMENT CALL

SCRIPS	CMP	SUPPORT	TARGET		REMARK
		STOP LOSS	T1	T2	

BULK DEALS (BSE)

SCRIP	CLIENT NAME	BUY/SELL	QUANTITY	PRICE
BERLDRG	KAMLESH KANTILAL SHAH	S	25,585	40.65
TIRIN	ARCADIA SHARE & STOCK BROKERS PVT. LTD	B	35,000	53.49
UNIQUEO	MITA DIPAK SHAH	S	40,000	18.31

BULK DEALS (NSE)

SCRIP	CLIENT NAME	BUY/SELL	QUANTITY	PRICE
PALRED	PRAKASH TRYAMBAK JOSHI	SELL	350000	25.9
RASOYPR	SBM TRADING COMPANY PRIVATE L	SELL	9300000	0.23

SCRIP'S IN F&O BAN

(To resume for normal trading below 80% of market wide limit required)

Nil



NIFTY 50 STOCKS: SUPPORT & RESISTANCE						
Symbol	Close	Support 1	Support 2	Pivot Point	Resistance1	Resistance2
ACC	1470.70	1458.47	1446.23	1474.23	1486.47	1502.23
AMBUJACEM	229.95	226.47	222.98	229.28	232.77	235.58
ASIANPAINT	767.35	760.23	753.12	765.62	772.73	778.12
AXISBANK	574.65	568.10	561.55	576.95	583.50	592.35
BAJAJ-AUTO	2302.95	2273.63	2244.32	2304.32	2333.63	2364.32
BANKBARODA	160.10	158.67	157.23	160.73	162.17	164.23
BHARTIARTL	403.00	397.72	392.43	405.23	410.52	418.03
BHEL	252.70	247.55	242.40	251.25	256.40	260.10
BPCL	817.70	800.85	784.00	812.35	829.20	840.70
CAIRN	190.95	189.83	188.72	191.37	192.48	194.02
CIPLA	644.00	633.87	623.73	649.93	660.07	676.13
COALINDIA	383.35	377.83	372.32	382.92	388.43	393.52
DRREDDY	3527.95	3485.47	3442.98	3542.73	3585.22	3642.48
GAIL	379.95	371.63	363.32	378.32	386.63	393.32
GRASIM	3511.85	3479.90	3447.95	3534.05	3566.00	3620.15
HCLTECH	980.10	960.18	940.27	978.42	998.33	1016.57
HDFC	1229.25	1207.43	1185.62	1228.37	1250.18	1271.12
HDFCBANK	1029.40	1019.83	1010.27	1031.77	1041.33	1053.27
HEROMOTOCO	2643.40	2600.83	2558.27	2634.67	2677.23	2711.07
HINDALCO	131.60	129.60	127.60	131.80	133.80	136.00
HINDUNILVR	846.20	839.03	831.87	849.52	856.68	867.17
ICICIBANK	314.50	312.00	309.50	314.00	316.50	318.50
IDEA	169.20	165.48	161.77	168.72	172.43	175.67
IDFC	153.05	152.23	151.42	153.32	154.13	155.22
INDUSINDBK	855.30	847.23	839.17	858.17	866.23	877.17
INFY	2016.60	1983.87	1951.13	2007.93	2040.67	2064.73
ITC	321.45	317.82	314.18	320.13	323.77	326.08
KOTAKBANK	1368.15	1360.05	1351.95	1372.55	1380.65	1393.15
LT	1626.75	1607.55	1588.35	1624.20	1643.40	1660.05
LUPIN	1744.75	1715.63	1686.52	1741.12	1770.23	1795.72
M&M	1198.15	1180.15	1162.15	1202.05	1220.05	1241.95
MARUTI	3708.90	3690.32	3671.73	3714.63	3733.22	3757.53
NMDC	131.35	129.77	128.18	131.63	133.22	135.08
NTPC	134.65	133.92	133.18	134.73	135.47	136.28
ONGC	327.90	322.40	316.90	329.80	335.30	342.70
PNB	156.25	151.30	146.35	155.05	160.00	163.75
POWERGRID	143.20	141.08	138.97	142.67	144.78	146.37
RELIANCE	875.80	867.12	858.43	880.68	889.37	902.93
SBIN	277.60	275.87	274.13	277.83	279.57	281.53
VEDL	196.75	192.77	188.78	195.58	199.57	202.38
SUNPHARMA	954.80	941.32	927.83	960.03	973.52	992.23
TATAMOTORS	484.35	475.25	466.15	481.35	490.45	496.55
TATAPOWER	74.10	73.18	72.27	74.62	75.53	76.97
TATASTEEL	324.70	320.93	317.17	325.92	329.68	334.67
TCS	2609.50	2586.83	2564.17	2604.92	2627.58	2645.67
TECHM	545.10	537.43	529.77	548.67	556.33	567.57
ULTRACEMCO	2917.45	2863.75	2810.05	2906.05	2959.75	3002.05
WIPRO	554.55	544.63	534.72	551.17	561.08	567.62
YESBANK	859.05	851.47	843.88	863.68	871.27	883.48
ZEEL	318.15	316.27	314.38	319.33	321.22	324.28



CORPORATE ACTION / BOARD MEETINGS

NSE Download Ref No :NSE/FAOP/29619:- Introduction of Futures & Options Contracts on 7 Additional Individual Securities: DHFL, KSCL, AJANTPHARM, BRITANNIA, SOUTHBANK, OIL, BEL WEF MAY 29, 2015

NSE Download Ref No :NSE/FAOP/29635:- Introduction of F&O Contracts on 7 Additional Individual Securities: AMARAJABAT, CASTROLIND, CEATLTD, BAJFINANCE, PIDILITIND, PAGEIND, SRF wef May 29, 15

NSE Download Ref.No.:NSE/CML/29682:- Suspension of trading in Equity shares of Companies SKUMARSYNF, BRANDHOUSE and KRISHNAENG for non-compliance of certain clauses of Listing Agreement wef June 3, 2015

NSE Download Ref.No.:NSE/CML/29725:- Suspension of trading in Equity Shares – Welspun Enterprises Limited due to Scheme of Amalgamation and Arrangement with Welspun Projects Limited wef June 4, 2015

NSE Download Ref.No.:NSE/CML/29796:- Change in Symbol and Name of the Company-AHMEDFORGE w.e.f. June 1, 2015

OLD SYMBOL- AHMEDFORGE, NEW SYMBOL- METALFORGE

NSE Download Ref.No.:NSE/FAOP/29819:- Adjustment of Futures and Options contracts in the security Adani Enterprises Limited(ADANIENT)EX-date- 3 June 2015

BOARD MEETINGS

COMPANY NAME	DATE	PURPOSE	RS. PER SH.
HEROMOTOCO	1-Jun-15	Dividend	30
RAIN	2-Jun-15	Annual General Meeting	
RSYSTEMS	3-Jun-15	Annual General Meeting/Dividend	
ITC	3-Jun-15	Dividend	6.25
ADANIENT	3-Jun-15	Scheme Of Arrangement	
IRB	4-Jun-15	Interim Dividend	
PAGEIND	4-Jun-15	Interim Dividend	
ICICIBANK	4-Jun-15	Annual General Meeting/ Dividend	5
HATSUN	4-Jun-15	Interim Dividend	
TCS	5-Jun-15	Annual General Meeting /Dividend	24
SBBJ	5-Jun-15	Annual General Meeting	
ORIENTBANK	10-Jun-15	Annual General Meeting/ Dividend	3.3
POLARIS	10-Jun-15	Annaul General Meeting/Final Dividend	10
SUBEX	10-Jun-15	Annual General Meeting	



NEWS & RUMOURS:

- Gold (Spot Dollar) major support = \$1167/\$1141 & Resistance = \$1211/\$1243.
- Crude oil range->\$52 to \$62.
- U.S. Stocks Decline from near Record Levels amid Greece Concerns: - U.S. stocks fell, with benchmark indexes trimming their best monthly gains since February, as concerns reignited about a Greek debt deal.
- China Stock Market Turnover Surges to Record: - More money is changing hands trading stocks in China than in the U.S., a market more than twice its size.
- Pending Sales of Existing Homes in U.S. Increased 3.4% in April: - More Americans than forecast signed contracts to purchase previously owned U.S. homes in April, indicating a pickup in the housing market during the busy spring selling period.
- Consumer Comfort in U.S. Slumps on Views of Buying Climate: - Consumer confidence in the U.S. fell for a seventh consecutive week and attitudes about whether it was a good time to spend slumped by the most since 2011.
- WTI oil futures trim losses after U.S. supplies fall more than expected: - West Texas Intermediate oil futures trimmed losses on Thursday, after data showed that oil supplies in the U.S. fell for the fourth consecutive week last week.
- Natural gas futures plunge 4% after bearish storage data: - Natural gas futures plunged sharply to hit a three-week low on Thursday, after data showed that U.S. natural gas supplies rose more than expected last week.
- Gold inches up as instability in China, Greek debt crisis weigh: - [Gold futures](#) ticked up modestly on Thursday halting a two-day skid, as slowing developments in Greek debt negotiations and a sell-off of Chinese equities limited more lucrative

TRENDS & OUTLOOK – DATE: 29- May- 2015

PRECIOUS METALS:

COMMDITY (MCX)	S2	S1	PIVOT POINT	R1	R2
GOLD (June)	26420	26600	26830	27148	27365
SILVER (July)	36000	37200	38300	39500	40570

BASE METALS

COMMDITY (MCX)	S2	S1	PIVOT POINT	R1	R2
COPPER (June)	384	389	393	398	405
ZINC (May)	137.10	139.30	141.10	144.70	147.40
LEAD (May)	120.20	122.70	125.25	128.55	131.20
NICKEL (May)	781	795	817	831	848

ENERGY

COMMDITY (MCX)	S2	S1	PIVOT POINT	R1	R2
CRUDE OIL (June)	3420	3535	3670	3792	3865
NATURAL GAS (June)	162	169	176	184	189

DATE TALKS : TODAY'S ECONOMIC DATA :

G7 Meetings, Prelim GDP, Prelim GDP Price Index, Chicago PMI, Revised UoM Consumer Sentiment, Revised UoM Inflation Expectations.



Registered Office

Indira House, 3rd Floor, 5 Topiwala Lane,
Opp. Lemington Road Police Station, Grant Road (East), Mumbai - 400007.

Corporate Office

'Ramavat House' E-15, Saket Nagar, Indore - 452018 (M.P.)

Customer Care

Tel: +91-731-4097170/ 71/ 72/ 73/ 74 M. +91 93031 72345

Email: customercare@indiratrade.com www.indiratrade.com



INSTITUTIONAL DEALING UNIT

Africa House, 5, Topiwalla Lane, Lamington Road, Mumbai, 400007

Tel: +91 22 30080678 Fax : +91 22 23870767 Email : ie@indiratrade.com

Disclaimer

This report is for private circulation within the Indira Group. This report is strictly confidential and for information of the selected recipient only and may not be altered in any way, transmitted to, copied or distributed, in part or in whole, to any other person or to the media or reproduced in any form. This report should not be construed as an offer or solicitation to buy or sell any securities or any interest in securities. It does not constitute a personal recommendation or take into account the particular investment objectives, financial situations, or any such factor. The information, opinions estimates and forecasts contained here have been obtained from, or are based upon, sources we believe to be reliable, but no representation of warranty, express or implied, is made by us to their accuracy or completeness. Opinions expressed are our current opinions as of the date appearing on this material only and are subject to change without notice.